

In[104]:=

```
mainDir = SetDirectory[NotebookDirectory[]];  
<< swSVM1101`
```

In[106]:=

```
Clear[fileNames, dataImg]  
fileNames = StringTake[FileNames["*.png"], {1, -5}]  
iMax = Length[fileNames]
```

Out[107]=

```
{d2Pacijent10.12}
```

Out[108]=

```
1
```

In[109]:=

```
i = 1; maskIndeks = 1; numberPixelsAverage = 1; imageNorm = 100;  
dataImg = Import[fileNames[[i]] <> ".png", "Data"];
```

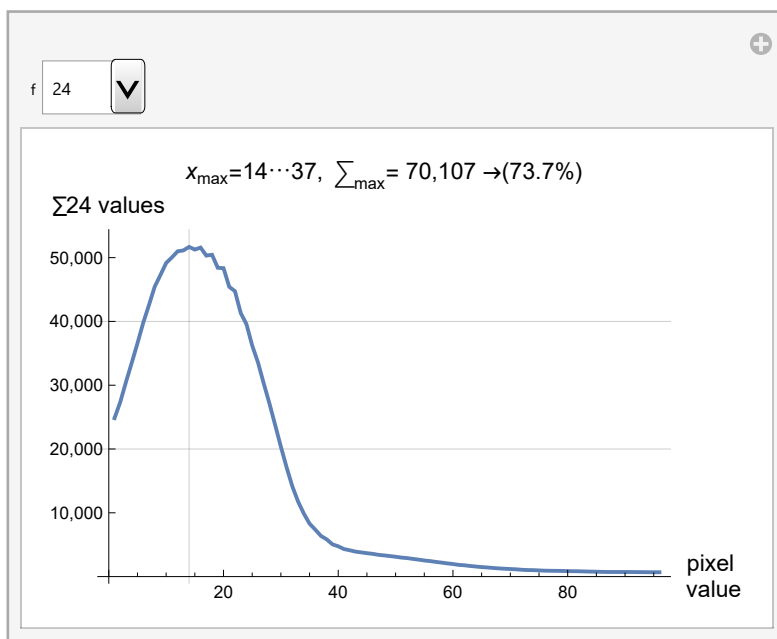
In[111]:=

```
<< swSVM1102x24`
```

In[112]:=

```
fig1 = manipulateHistListPlotFramed
```

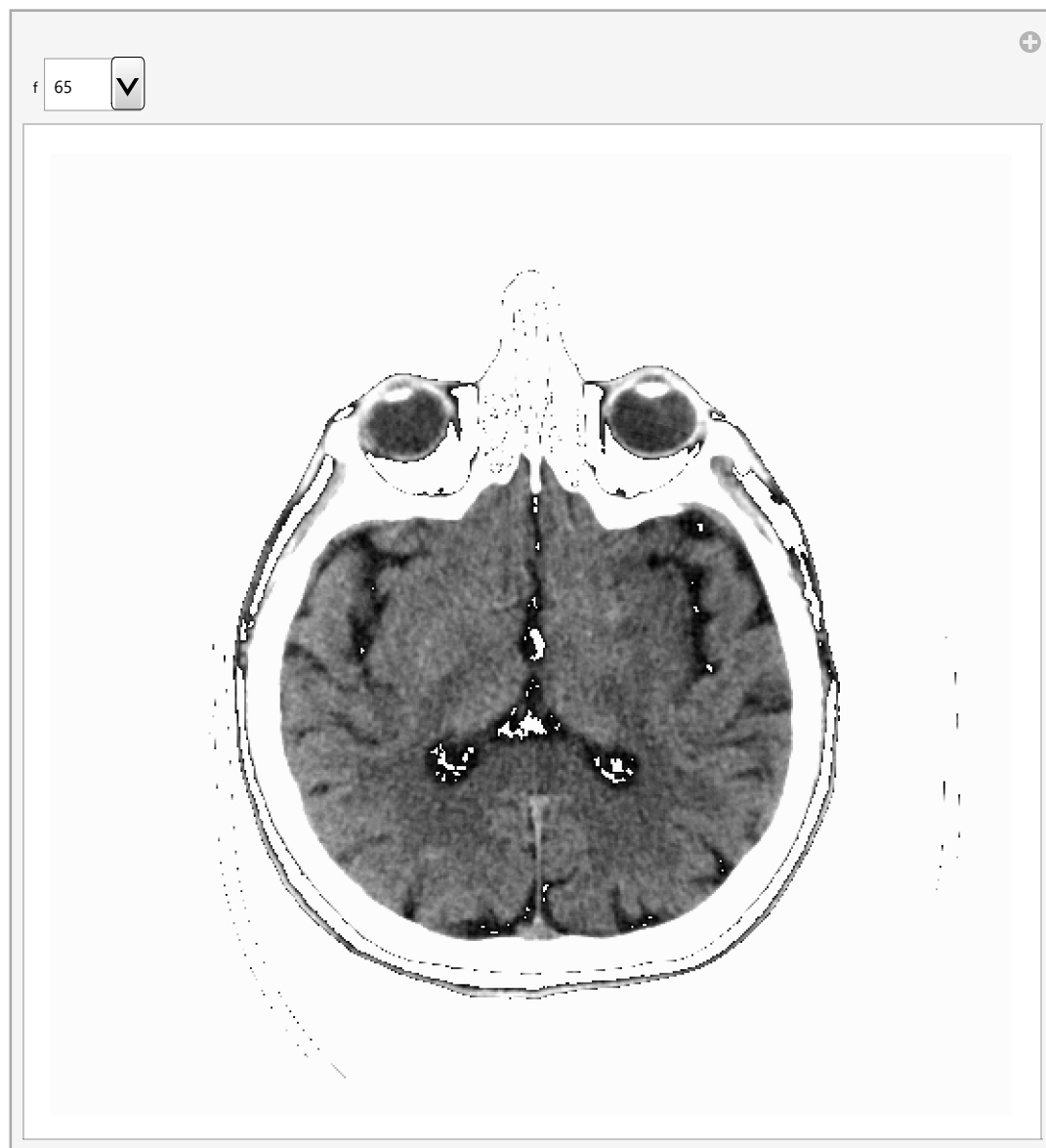
Out[112]=



In[113]:=

**fig2 = manipulateHPlotFramed**

Out[113]=



In[114]:=

```
(  
  Export["D2x005x24.tif", fig1, ImageResolution -> 300];  
  Export["D2x006x65.tif", fig2, ImageResolution -> 300];  
)
```